

Totem ECDIS

**THE ONLY ECDIS WITH DECISION SUPPORT TOOL (DST) !
COLLISION AVOIDANCE ADVICE COMPLYING WITH
THE INTERNATIONAL REGULATIONS FOR PREVENTING COLLISIONS AT SEA**



Unique Features:

- E-navigation Data Audit
- GPS validation - Detect GPS spoofing
- Watch Take Over
- AIS update and AIS messages

Approved as per: IMO resolution MSC 191(79), A.694(17) and MSC. 232(82).

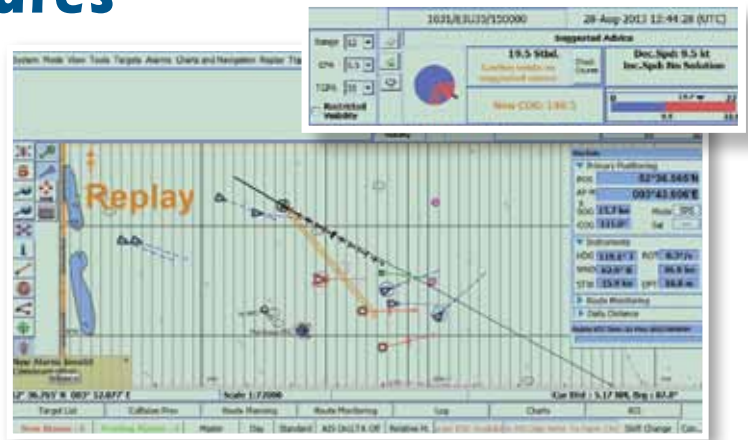
Tests carried out:
Performance testing IEC 61174; Environmental testing IEC 60945; Serial interface testing IEC 61162-1, and Indication of navigation related information IEC 62288.

Totem Plus
Where shipping meets high-tech

Totem ECDIS

Unique Safety Features

- **Collision Avoidance:** A revolutionary Decision Support Tool complying with COLREGS. The system not only alert the Master or OOW to the risk of collision, but advise the best course or speed change needed in order to avoid collision. The advice given is in accordance with the legal requirements of the International Regulations for Preventing Collisions at Sea 1972 (COLREGS). All the information is calculated automatically for all targets and is continuously refreshed
- **EDA:** History files can be analyzed by E-navigation Data Audit program to detect near miss events (EDA free copy is available with Every ECDIS)
- **GPS validation:** To avoid GPS spoofing, Totem ECDIS is monitoring the difference between DR and GPS positions at all times, and issues an alarm if the difference within a set time exceeds the set allowed distance
- **Watch Take Over:** The watch take over procedure, implemented by every officer commencing a watch on the bridge, gives the OOW a clear picture of the system functionality. The procedure ascertains that the system is configured and working properly, sensors information is correct, correct charts are available, license is valid etc. The procedure is logged for future auditing
- **AIS update and AIS messages:** Totem ECDIS enables direct updating of AIS from the ECDIS, and sending and receiving AIS messages by the ECDIS using full keyboard capability



Electronic Charts

- Totem ECDIS supports C-MAP ENC (Jepessen) charts CM93/3 and Official Database (Jepessen Primar; ENC)
- Totem ECDIS supports IHO S-57 and IHO S-63 charts (ENCs) (Admiralty, Primar and more)
- Totem ECDIS is compatible with the Admiralty Information Overlay (AIO), the digital version of Admiralty Notices to Mariners

Training

Totem Plus provides online CBT (Computer Based Training) for Type Specific Training, as per ISM code. Moreover, type specific training can be provided by several authorized institutes.